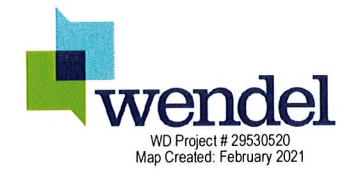
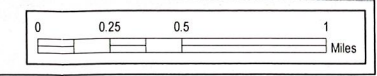


# Town of Cambria Comprehensive Plan Update

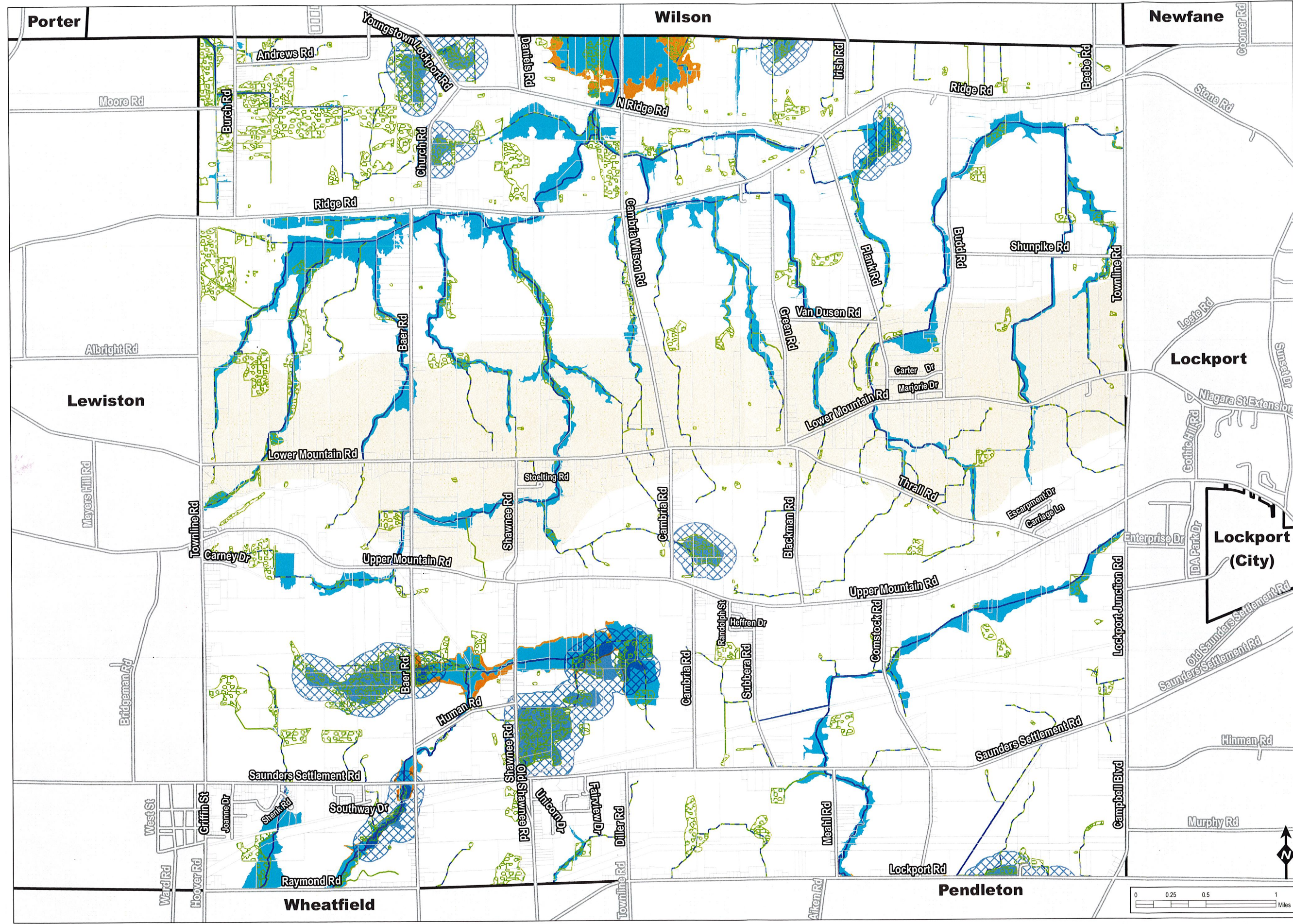
Cambria, New York

## Existing Zoning

LEGEND	
	2020 Parcels
	Residential, R-1
	Medium Density Residential Use
	Recreational Vehicle Parks and Campgrounds
	Planned Development
	Agri-Residential
	Business 1, B-1
	Business 2, B-2
	Industrial ED
	Escarpment District



Wendel WD Architecture, Engineering, Surveying & Landscape Architecture, P.C. shall assume no liability for 1. Any errors, omissions, or inaccuracies in the information provided regardless of how caused or 2. Any decision or action taken or not taken by the reader in reliance upon any information or data furnished hereunder.  
 Data Sources: NYS GIS Program Office, NYS Office of Information Technology Services GIS Program Office (GPO), Niagara County Real Property Services, Town of Cambria



**Town of Cambria  
Comprehensive Plan  
Update**  
Cambria, New York

**Environmental  
Features**

**LEGEND**

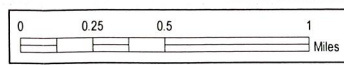
- 2020 Parcels
- Niagara Escarpment Location
- Federal Wetlands
- State Wetlands
  - Wetland
  - Checkzone
- Streams & Ditches
  - Primary
  - Secondary
- FEMA Floodzones
  - 100 Year Floodzone
  - 500 Year Floodzone



WD Project # 29530520  
Map Created: February 2021

Wendel WD Architecture, Engineering, Surveying & Landscape Architecture, P.C. shall assume no liability for 1. Any errors, omissions, or inaccuracies in the information provided regardless of how caused or; 2. Any decision or action taken or not taken by the reader in reliance upon any information or data furnished hereunder.

Data Sources: NYS GIS Program Office, NYS Office of Information Technology Services GIS Program Office (GPO), Niagara County Real Property Services, New York State Department of Environmental Conservation, FEMA, USFWS





# Town of Cambria Comprehensive Plan Update

Cambria, New York

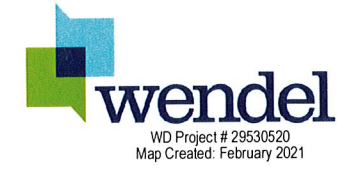
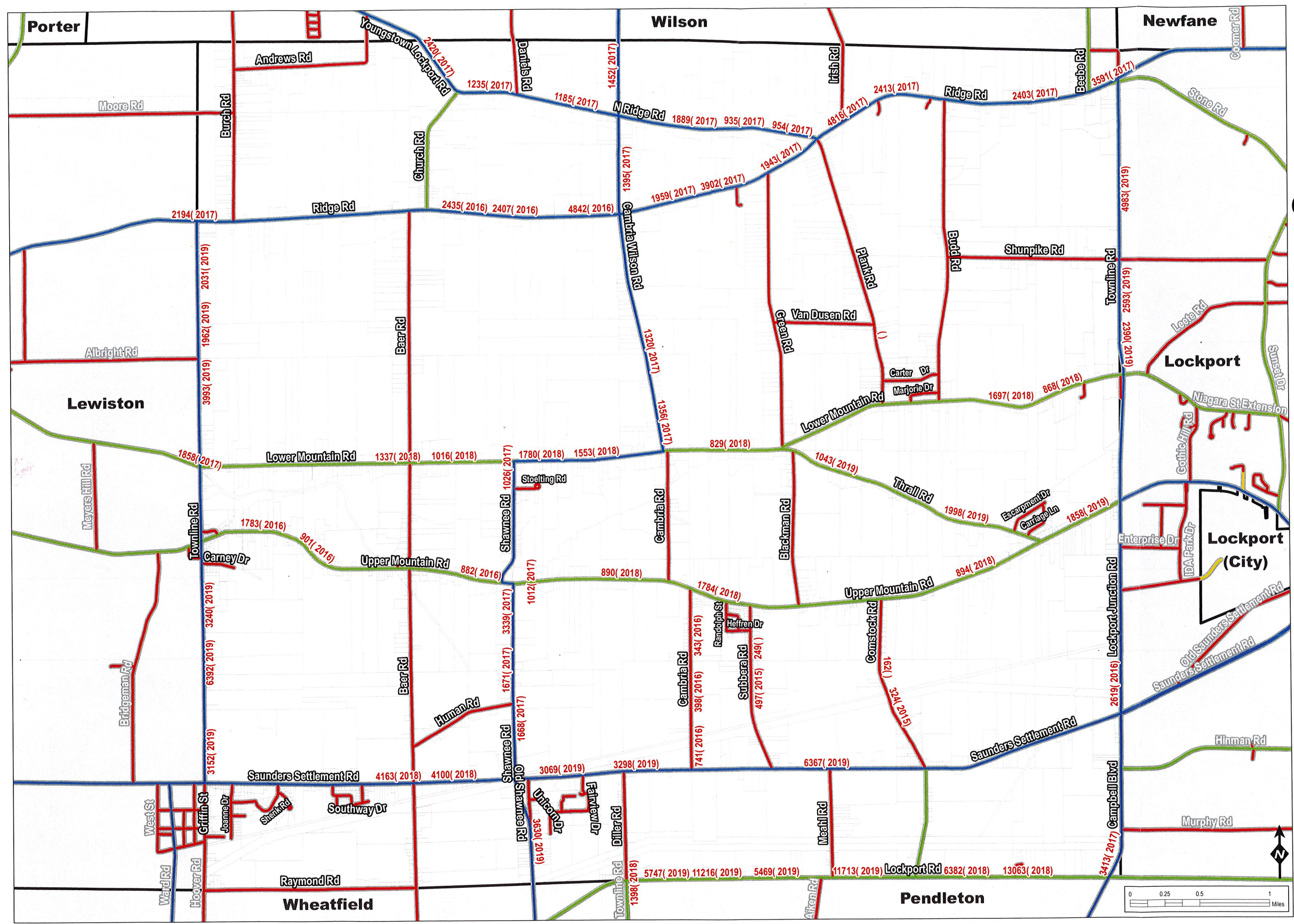
## Transportation

**LEGEND**

- 2020 Parcels
- Traffic Count (Year Labeled)

**Road**

- State Route
- County Route
- Town Road
- City Street
- Private Road



Wendel WD Architecture, Engineering, Surveying & Landscape Architecture, P.C. shall assume no liability for 1. Any errors, omissions, or inaccuracies in the information provided regardless of how caused or; 2. Any decision or action taken or not taken by the reader in reliance upon any information or data furnished hereunder.  
Data Sources: NYS GIS Program Office, NYS Office of Information Technology Services GIS Program Office (GPO), Niagara County Real Property Services, NYSDOT

